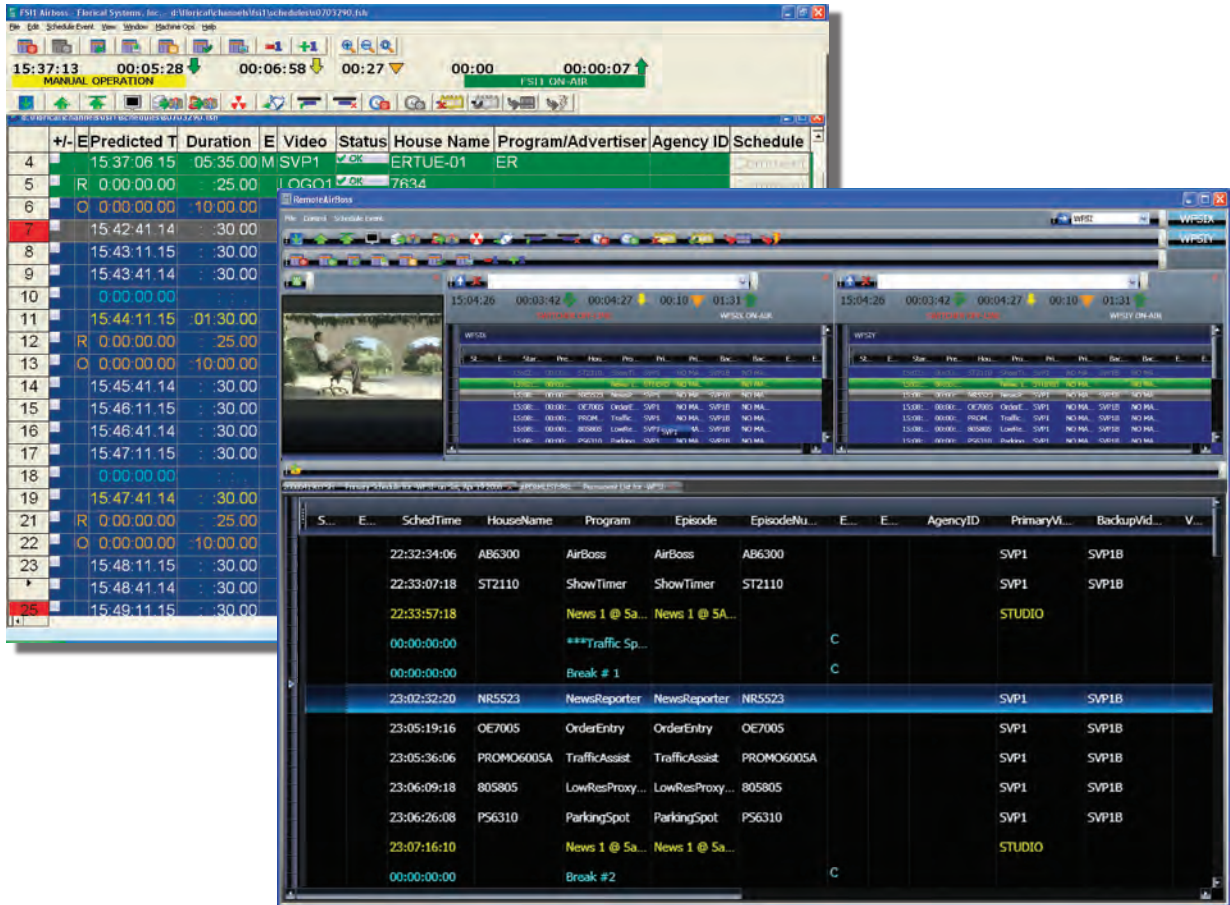


AirBoss is the leading on-air presentation solution with the proven reliability needed in mission critical television operations. Remote AirBoss is an option within our S.M.A.R.T. Central application that gives you access to your system from any PC with internet/LAN access. Both are easy to operate during live programming and provide totally unattended operation of programs and commercials. With AirBoss you can improve the on-air look with frame-accurate control of equipment ranging from video servers to master control switchers to digital effects and more.

AIRBOSS



REMOTE AIRBOSS

- Reliable “lights out” unattended automation.
- Flexible for fast-paced live programming.
- Accurate control for best on-air look
- Easy to use Drag/Drop, Cut/Paste editing.
- Expandable from single channel to multichannel.s
- Most used automation system for centralization.
- Feature Rich options include JIP, Breaking News, News Repeater, Parking Spot, TimeShifter, Regional Breakaway, and more.



Present



Remote AirBoss™

FEATURES

Unattended On-Air Control

- Play programs & automatically insert commercials through a master control switcher for unattended operation.
- Link up to 10 schedules per channel each day for alternate scheduling & automatically load the next day's schedule.
- Automatically initiate events at a clocked time or simply follow the previous event.
- *LowResViewer accepts any WMV9 compatible stream(available in RemoteAirBoss only)

Expand & Distribute Control

- *Support multiple levels of system redundancy from cold standbys to hot protection stream mirroring per channel.
- *Control multiple device servers from the same play list.
- *Assign backup sources for each event, including mixed VTR & video server backups.
- *Run multiple channels per workstation that can be dynamically reassigned.

Schedule the On-Air Presentation

- Easily edit schedules with pop-up lists & familiar copy, cut, paste, find & replace operations.
- Automatically update program segment & spot times from the media database.
- Control how events run: Normal, Manual Start/End, External End, Clock, Benchmark, or Relative.
- *Schedule many event types including Program, Break, Secondary (Auxiliary & Relative), & Comments.
- *Use AirBoss Editor for play schedule import, editing & as-run log reporting with many standard traffic systems.
- Record discrepancy notes & variance codes with AirBoss for accurate traffic reconciliation.

Stay In Control

- Get hands-on control with operator override of any event at any time.
- Play multi-segment programs with frame accurate Start of Message & Length values.
- *Automate master control switchers including keys, squeezes, transition rate & type, audio/video splits & audio over control.
- Easily edit schedule with drag/drop, cut/paste and database lookup features.
- *Use the configurable Quick Reaction Control Panel for push-button control during live events.

Expand & Distribute Automation

- *Dynamically reassign control between several control rooms to handle different groups of transmission channels at different locations.
- Support multiple time zones with each channel scheduled in local time & seamless Daylight Savings time adjustments.
- Automatically compensate for video path delays with Zero Timing to seamlessly mix material from different locations within the same break.
- Reduce equipment costs by sharing machine control resources with other Floral automation products.

*Additional software, interfaces, hardware, etc. may be required. Ask your sales representative for more information.

Product Specifications

System	Dell / Intel Core 2 computer with Microsoft Windows Windows XP Pro-SP3, 3.0GHz CPU, 2 GB RAM, 160GB HD X2, RAID 1.
Options	Channel license needed to run one schedule in AirBoss. Remote AirBoss only available with AirBoss and S.M.A.R.T. Central.
	Schedule & control program playback in addition to breaks.
	Device Server with one CPU, WinXP SP3, 16 ports.
	Rack mount computer upgrade with optional dual power supplies. (DP)
	Control room switching software to reassign control on the fly & handle different mixes of transmission channels at different times.
	Multiple Time Zone software with each channel scheduled in local time & seamless Daylight Savings time adjustments.
	Zero Timing per remote site to automatically compensate for video path delays between source material originating from different locations.
	Airguide - Automate EPG updates as on-air schedule changes.
	Dual Redundant QRCP for push-button event control (Roll/Take, Hold, etc.) of mirrored control systems each with 12 GPOs & four GPIs.
	QRCP dynamic channel assignment software to gang multiple channels for push-button event control.
	NewsRepeater: Automatic recording of program segments for playback with new spot insertions; includes (GPI) signals for cable insertion.
	Regional breakaway switching control software to release & rejoin regional channels with the main channel.
	Schedule & control regional commercials from multiple channels & one program channel.
	Multiple signal path control from a source router to a cascaded master control switcher.
	AutoJIP - Automated Join In Progress/Breaking News - for detailed description see available technical data sheet
	Parking Spot - makes editing on-air schedules in a fast paced environment easy. Alternate events are readily available in a "floating clipboard".
	Redundant machine component software for mirrored device servers controlled from the same playlist.
	TimeShifter - an innovative delay feature for back-to-back live programs. Schedule the shift in advance or on-the-fly.
	AirBoss Editor - schedule preparation & editing software to import traffic playlists & generate as-run logs for traffic reconciliation.
	LowRes Viewer - on-screen viewer for confidence feeds available with Remote AirBoss only.

Supported Devices Contact Floral or visit www.floral.com for a current list of specific devices from the following manufacturers:

Digital Video Servers

Video servers controlled using VDCP protocol via RS-422 include servers from, Avid/Pluto, Grass Valley Group/Thomson, Leitch, Omneon, Pinnacle/HP, SeaChange, 360 Systems and Sony.

Video Tape Recorders

VTRs controlled using Sony BVW protocol via RS-422.

Master Control Switchers

Pro-Bel, Leitch, Miranda, Ross, Thomson/GVG, Evertz 9625, Quartz and Utah.

Routing Switchers

Adrienne, Evertz, Grass Valley Group, Image Video, Leitch, Practel, Probel, Nvision and Videotek.

Digital Video Effects & Still Stores

Accom, Kaydara, Pinnacle, Miranda, Snell & Wilcox.

Character Generators & Logo Inserters

Chyron, Clarity, Leitch, Pinnacle, Miranda, Quantel.

Audio Mixers & Audio Carts

360 Systems, Enco, Graham-Patten, Sony Mini-disk.

